



*At St. Charles, all are invited to
meet Christ, know Christ,
love Christ and serve Christ.*

**December 3, 2023
FIRST SUNDAY OF ADVENT**



St. Charles Parish & School | 313 Circle Drive, Hartland, WI 53029
262-367-0800 | www.stcharleshartland.com | email: parish@stcharleshartland.org



WELCOME TO ST. CHARLES - WE ARE HERE FOR YOU



PASTOR
Fr. Ken Omernick



ASSOCIATE PASTOR
Fr. Ariel Orozco

ST. CHARLES STAFF TEAMS

ASSOCIATE PASTOR & Becoming Fully Catholic:
Fr. Ariel Orozco, aorozco@stcharleshartland.org

TEACHING PARISH SEMINARIAN:
Deacon David Sweeney, dsweeney@sfs.edu
Timothy Heyrman, theyrman@sfs.edu

SCHOOL TEAM 262-367-2040
Principal/School Team Lead: Dan Garvey, Ext. 208,
dgarvey@stcharleshartland.org
Advancement Officer: Allison Caswell, Ext. 202,
acaswell@stcharleshartland.org
School Administrative: Lisa Moehrke, Ext. 206,
school@stcharleshartland.com
School Administrative: Karen Dejewski, Ext. 206,
school@stcharleshartland.com
School Administrative: Nina Wolf, Ext. 206,
school@stcharleshartland.com

WORSHIP TEAM
Worship Lead: Peg Kasun, Ext. 225,
pkasun@stcharleshartland.org
Liturgist: Elizabeth Thompson, M.Div., 262-367-6704
ethompson@stcharleshartland.org
Music Director: Dr. Aaron Mathews, Ext. 225,
amathews@stcharleshartland.org
Wedding Coordinator: Dee Anne Hamer, Ext. 215,
dhamer@stcharleshartland.org

DISCIPLESHIP TEAM
Discipleship Team Lead: Deacon Jon Gabik, Ext. 201,
jgabik@stcharleshartland.org
Adult Discipleship Lead: Maria Notch, Ext. 220,
mnotch@stcharleshartland.org
Adult Discipleship Coordinator: Hannah Osborne, Ext. 220,
hosborne@stcharleshartland.org
Children's Discipleship Co-Lead: Shelly Buchan, Ext. 205,
sbuchan@stcharleshartland.org
Children's Discipleship Co-Lead: Alicia Van Hecke, Ext. 205,
avanhecke@stcharleshartland.org
Student Discipleship Lead: Nick Scanlan, Ext. 209,
nscanlan@stcharleshartland.org
Student Discipleship Assistant: Dominic Van Hecke, Ext. 221,
lifeteen@stcharleshartland.org

Baptism Coordinator: Mary Jo Romportl, Ext. 200,
mjromportl@stcharleshartland.org

OPERATIONS TEAM

Operations Manager/Team Lead: Deacon Jon Gabik,
Ext. 201, jgabik@stcharleshartland.org
Facilities Manager: Mike Cattani, Ext. 210,
mcattani@stcharleshartland.org
Maintenance Manager: Tim Orzechowski, Ext. 217,
torzechowski@stcharleshartland.org
Accounting: Dee Anne Hamer, Ext. 215,
dhamer@stcharleshartland.org
Administrative: Brenda Zingsheim, Ext. 215,
bzingsheim@stcharleshartland.org
Cornerstone/Safeguarding: Karen Dejewski, Ext. 215,
cornerstoneproject@stcharleshartland.org

COMMUNICATIONS & STEWARDSHIP TEAM

Communications & Stewardship Team Lead: Allison Caswell,
Ext. 202, acaswell@stcharleshartland.org
Assistant to the Pastor: Terrie Carew, Ext. 224,
tcarew@stcharleshartland.org
Graphic Design Specialist: Renee Krier, Ext. 224,
rkrier@stcharleshartland.org
Administrative: Kathy Gillstrom, Ext. 200,
kgillstrom@stcharleshartland.org
Administrative: Mary Jo Romportl, Ext. 200,
mjromportl@stcharleshartland.org

PARISH OFFICE: 262-367-0800,
Mon. - Fri., 8 am - 4 pm
EMAIL US: parish@stcharleshartland.org
PARISH SCHOOL: 262-367-2040,



school@stcharleshartland.org
WEBSITE & LIVESTREAM:
www.stcharleshartland.com or
scan QR code with phone camera

WELCOME TO ST. CHARLES - WE ARE HERE FOR YOU

SATURDAY MASS OF ANTICIPATION: 5:00pm

SUNDAY MASS TIMES: 7:00am, 9:00am, 11:00am & 6:00pm

WEEKDAY MASS: Monday - Friday: 8:30am & Saturday: 8:30am

TUESDAY TRADITIONAL MASS

Monthly on the fourth Tuesday at 5:30 pm

EUCCHARISTIC ADORATION

Monday: 2:00pm – 9:00pm

Tuesday: 2:00pm – 10:00pm

Wednesday: 7:00 – 8:20am and
9:00am – 3:00pm

Thursday: 7:00 – 8:20am and
9:00am – 5:00pm

Friday: 9:00am – 6:00pm



RECONCILIATION

Saturdays: 3:00pm - 4:00pm & Thursdays: 5:00pm - 6:00pm

SACRAMENT OF THE SICK

By appointment with Fr. Ken or Fr. Ariel (Call the Parish Office).

ANOINTING MASSES: 2nd & 4th Fridays every month at 8:30 am

OUTREACH SERVICES TEAM: Terri Blazek: 262-367-7608,
jtblazek@wi.rr.com

TO ASK FOR PRAYERS or to be added to the email list, please email:
prayernetwork@stcharleshartland.org

FOR EMERGENCY PRAYERS, please email:

emergencyprayers@stcharleshartland.org

Printed weekly prayer sheets are available on the information wall.

ST. VINCENT DE PAUL: if you need food, shelter or assistance call
262-367-0800 (Parish Office)

NEED HOME COMMUNION:

For information call 262-367-0800 (Parish Office)

Mass Intentions for the Week of December 3rd



Sunday, December 3 ~ First Weekend of Advent

7:00 am † Beverly Enderlin

9:00 am Living and Deceased Members of St. Charles

11:00 am † Alys & Bud Hemmy

6:00 pm † John Burns

Monday, December 4

6:30 am † Joyce Wolfgram

8:30 am † Rose Geason

Tuesday, December 5

6:30 am Special Intention

8:30 am † Kathie Henkel

Wednesday, December 6

6:30 am † Richard Seidl

8:30 am † Barbara J. Clark

Thursday, December 7

6:30 am † Gene Gillingham

8:30 am † Cathy Caroll

6:00 pm † Eric Molenda

Friday, December 8

6:30 am † Norbert & Joseph Seipel

8:30 am Living and Deceased Members of St. Charles

6:00 pm † Barbara Cramlet

Saturday, December 9

8:30 am † Loretta Grambow

5:00 pm † William Schuenke

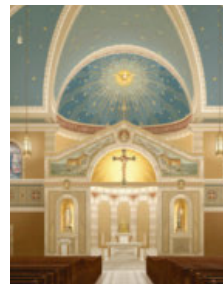
Sunday, December 10 ~ Second Sunday of Advent

7:00 am † Barbara Birschbach

9:00 am † Edwin Miller

11:00 am Living and Deceased Members of St. Charles

6:00 pm † Zephyr Benoit



Save the date for our new church's

Dedication Weekend

from April 5-7, 2024!

More information will be coming
soon. Stay tuned!

One of the easiest ways to support St. Charles Parish and School is through the secured online e-giving system.



PARISH SUPPORT
THRU NOVEMBER 5TH

FISCAL YEAR
JULY 1 THRU JUNE 30

2022 - 2023

Envelopes.....	\$25,412.51
Offertory.....	\$2,935.17
Weekend Total	\$28,347.68
E-Giving	\$14,329.88
YTD	\$795,325.04

2021-2022

Envelopes.....	\$26,813.70
Offertory.....	\$2,108.17
Weekend Total	\$28,921.87
E-Giving	\$10,380.85
YTD	\$711,656.87



WEEK 1 | HOPE

THIS WEEKEND'S GOSPEL MEDITATION

1ST SUNDAY OF ADVENT

Lately I've been listening to a science-based podcast on healthy daily living. The host frequently discusses the wide range of health benefits of sleep. So, each night I'm trying to get more, and better, slumber, and it's helping me feel energized. So, why in the world should we follow Christ's advice this week? "Watch therefore, for you do not know when the master of the house will come ... lest he find you asleep." Isn't sleep, especially at midnight and cockcrow, a good thing?

Of course, it is. But the wakefulness the Lord calls us to is a deep, personal orientation to Him. A nightly vigil is therefore a metaphor for this, but it's not just that. We should give up real sleep in order to pray, too. This difficult practice is a time-tested way to foster wakefulness of heart. When we give up sleep to pray, it focuses us. We learn that life is not an endless series of days.

You and I belong to the Lord — awake or asleep, in life and in death. Sooner or later, even our need for our physical sleep will pass away. And our attentiveness to God — that is, whether we are awaiting Him to meet us — will be all that matters.

May I challenge us this week and this Advent to intentionally give up at least one hour of sleep each week for prayer? Stay up later, wake up in the middle of the night, or an hour earlier, and pray. Will we be a bit more tired the next day? Yes. But we'll be amazed at the spiritual wakefulness that results, too.

~ Father John Muir

©LPi

PRAY WITH SCRIPTURE

Lectio Divina

15 minutes each day spent in God's presence — reading, reflecting, responding and resting with his Word — adds up to 90 hours in one year. That is time well spent and a testimony to how a little at a time turns into something remarkable!

Sunday, December 10th Readings

**Sunday: Is 40:1-5, 9-11/Ps 85:9-10, 11-12, 13-14 (8)/
2 Pt 3:8-14/Mk 1:1-8**

To find readings for the weekdays and/or Feast Days, please visit
<https://bible.usccb.org/bible/readings>.

Reflection questions for Sunday, December 10th

- The prophet Isaiah offers comfort and hope to the Israelites who were captive in Babylon in proclaiming that the glory of the Lord is returning to Israel. Do you have family or friends who could use words of encouragement from you?
- Peter speaks of being at peace while we wait for the promise of new heavens and a new earth when Christ returns. What gives you peace of mind these days?
- Fulfilling the prophecies of Isaiah, John the Baptist proclaimed the arrival of Jesus, "one mightier than I...(who) will baptize you with the Holy Spirit." Where do you sense the Holy Spirit present in your life?

READ. REFLECT. RESPOND. REST.



Cut out and keep in your Bible for reference!



DECEMBER ADULT DISCIPLESHIP HUDDLE

Adults of the parish are invited to the December Adult Discipleship Huddle on **Thursday, December 14th!** This is an opportunity for all to come and to learn more about their faith. This month we will be discussing "Life & Death - the Incarnation of Christ at Christmas and Grief around the Holidays." Come to either the morning session at 11:30am in the narthex or the evening session at 6:30pm in the LifeTeen Cafe. Contact Maria Notch with any questions: mnotch@stcharleshartland.org. Hope to see you there!

CELEBRATE ADVENT



ABOUT ADVENT WREATHS

Traditionally, Advent wreaths are constructed of a circle of evergreen branches and four candles are inserted, representing the four weeks of Advent. Ideally, three candles are purple and one is rose, but white candles can also be used.

The purple candles in particular symbolize the prayer, penance and preparatory sacrifices and good works undertaken at this time. The rose candle is lit on the third Sunday, Gaudete Sunday, when the priest also wears rose vestments at Mass; Gaudete Sunday is the Sunday of rejoicing because the faithful have arrived at the midpoint of Advent when their preparation is now half over and they are close to Christmas.

The progressive lighting of the candles symbolizes the expectation and hope surrounding our Lord's first coming into the world and the anticipation of His second coming to judge the living and the dead.



THE JESSE TREE

In the month before Christmas, the church anticipates the coming of Jesus through readings that span from the Old Testament creation story through Jesus' birth. Jesse, for whom the tree is named, is the first person in the genealogy of Jesus. At the top of this family tree are Mary and Jesus. Depicted in church windows and artwork for hundreds of years, this visual tree of life may even have been a forerunner of today's Christmas tree.

All you need for this project is a homemade drawing of a tree.

You can also make a Jesse tree by putting a few tree branches in a pot filled with gravel or sand or using a tabletop Christmas tree on which to hang Jesse tree ornaments.

Reflect on the readings and symbols of this ancient tradition. You can download symbols on card stock or print them on paper and glue them to construction paper or felt.

Sharing the Jesse tree story is a great way to help build anticipation for the birth of the Christ child, allowing the roots of faith to take hold and grow.

Taken from the United States Conference of Catholic Bishops (USCCB) website.

BLESSING OF AN ADVENT WREATH

The use of the Advent Wreath is a traditional practice which has found its place in the church as well as in the home. The blessing of an Advent Wreath takes place on the First Sunday of Advent or on the evening before the First Sunday of Advent.

When the blessing of the Advent Wreath is celebrated in the home, it is appropriate that it be blessed by a parent or another member of the family.

All make the sign of the cross as the leader says:

Our help is in the name of the Lord.

Response (R/.) Who made heaven and earth.

Then the Scripture, Isaiah 9 (lines 1-2 and 5-6) or Isaiah 63 (lines 16-17 & 19) or Isaiah 64 (lines 2-7) is read:

Reader: The Word of the Lord.

R/. Thanks be to God.

With hands joined, the leader says:

Lord our God,
we praise you for your Son, Jesus Christ:
he is Emmanuel, the hope of the peoples,
he is the wisdom that teaches and guides us,
he is the Savior of every nation.
Lord God,
let your blessing come upon us
as we light the candles of this wreath.
May the wreath and its light
be a sign of Christ's promise to bring us salvation.
May he come quickly and not delay.
We ask this through Christ our Lord.

R/. Amen.


The blessing may conclude with a verse from
"O Come, O Come, Emmanuel":

O come, desire of nations, bind
in one the hearts of humankind;
bid ev'ry sad division cease
and be thyself our Prince of peace.
Rejoice! Rejoice! Emmanuel
shall come to thee, O Israel.

— From *Catholic Household Blessings & Prayers*



St. Charles Parish & School



ENCOUNTER Jesus

with Fr. Declan Gibson

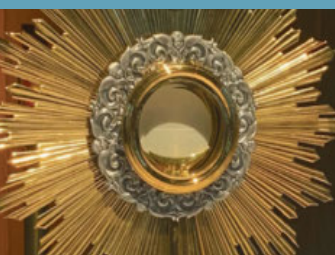
Monday, December 4 &
Tuesday, December 5

8:30 am Daily Mass
9:15 am Reconciliation
7:00 pm Parish Mission

- Exposition
- Eucharistic Reflection
- Benediction
- Reconciliation

***Bring the Family! Invite a Friend!
All are Welcome!***

The Parish Mission will not be Livestreamed.



Be still
and know that
I am God



IMMACULATE CONCEPTION

DECEMBER 8TH

December 8th is a Holy Day of Obligation, celebrating the Immaculate Conception. This dogma emphasizes the teaching that Mary was conceived without original sin in Her Mother St. Anne's womb. Theologically this makes sense: Jesus as God is without sin, so it is right that the womb through which He was given life [Mary] should also be protected from any stain of sin. Holy Mother Church made this teaching infallible (free of error) in 1854. Four years later, our Blessed Mother appeared to St. Bernadette at Lourdes, France stating, "I am the Immaculate Conception." There was no need to confirm what the Church already proclaimed as truth, but we can take comfort in knowing that Our Blessed Mother is always looking out for our purity and sanctity!

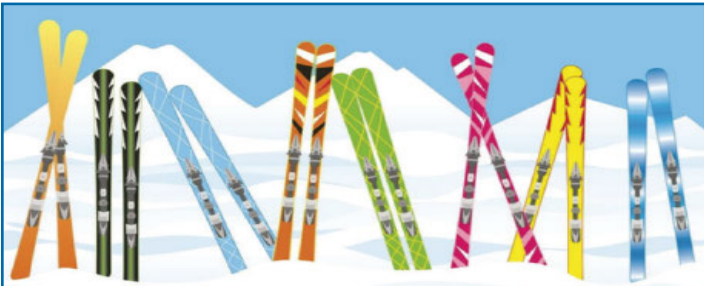
All are welcome to join us for our Immaculate Conception of the Blessed Virgin Mary Masses! Our Vigil Mass will be on Thursday, December 7 at 6 p.m., and we will also offer Masses on the feast day (Friday, December 8) at 6:30 a.m., 8:30 a.m., and 6 p.m. **Please note that the only entrance that will be open for the 8:30 a.m. Mass is the main parish entrance, formerly the site of the "front porch." The west Gym doors and school entrance will be locked to ensure the safety of our students and school staff.**

ADVENT

Reconciliation Opportunities

SACRAMENT OF RECONCILIATION

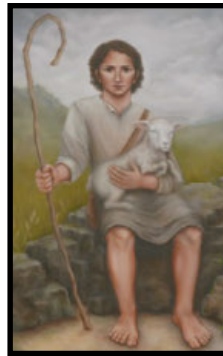
St. Charles will have many opportunities to celebrate the sacrament of Reconciliation this Advent. First, during our Encounter Jesus Event, there will be three priests available on Monday, December 4 and Tuesday, December 5 beginning at 7:00 pm. Following Exposition, Eucharistic Reflection, and Benediction, Father Declan Gibson will hear Confessions, along with two additional priests until everyone has had the opportunity to have their Confession heard. This takes the place of our usual Communal Penance Services this Advent. Second, on the mornings of December 4 and 5, Father Gibson will hear confessions after daily Mass. Third, every Thursday and Saturday, there will be two priests scheduled during our regular Reconciliation times. As a reminder, the regular times are Thursdays at 5:00 pm and Saturdays at 3:00 pm. We invite you to come and prepare your heart to receive Christ more fully at Christmas!




REGISTER FOR THE 2024 SKI CLUB SEASON

**Students, parents, and all parish members
are welcome to join!**

First-time beginners for skiing and snowboarding are also encouraged to sign up. Lift tickets, rentals, and optional lessons are at great group rates! The club meets at Little Switzerland in Slinger, and our event dates are on January 12, January 26, February 9, and February 23 from 4-9:30 pm. Visit the News article on our website for more information and to register. **Deadline to register is Wednesday, December 13th.**



Catechesis of the Good Shepherd

Montessori Religious Education 

CATECHESIS OF THE GOOD SHEPHERD (CGS) CORNER

Do You Know Your (Liturgical) Colors?

Colors can help even the youngest child connect to the life of the Church. The color of the priest's vestments (and other decorations within the Church) tells us something important about the Liturgical season or what is being celebrated or remembered on that particular day.

Purple is the Church's color for the season of preparing for a great celebration or feast. Christmas and Easter are our two great feasts each year, which include a whole season of preparation. Advent is our four-week season of preparation for Christmas, and Lent is our six-week preparation for Easter.

White is the color for the celebration of the feast itself, most notably Christmas and Easter. In fact, if you notice the priest's vestments carefully from week to week, you will discover that the celebrations of Christmas and Easter aren't only for one day but for a number of weeks!

Green is the color for "Ordinary Time" when we focus on growing deeper in our love of Christ. Red is the color for Pentecost and feasts of great love (martyrs).

For children ages 3-8: What color did you see the priest wearing at Mass? What does that color mean (preparation, celebration)? What season are we celebrating in the Church (Advent, Christmas, etc.)?

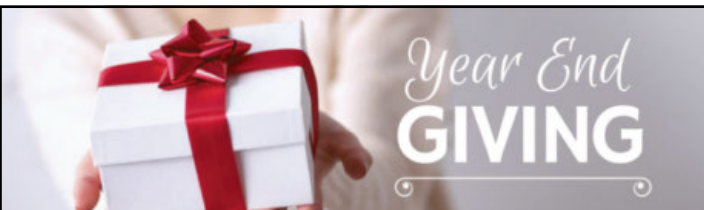
Consider placing a colored cloth on a prayer corner or even at the center of the dinner table with a candle or centerpiece during each season to remind your family what time of year it is in the Church. Children love to help change the color at the proper time!

Lisa Dedinsky, CGS Catechist



SCHOOL'S OPEN HOUSE

Are you interested in enrolling your child at St. Charles Parish School for the 2024-2025 school year? Save the date for our upcoming Open House on **Sunday, January 21 from 10 a.m.-12:30 p.m.**! This is a great opportunity to meet Principal Garvey, our teaching staff, and currently-enrolled families to learn more about what makes our school community so special!



YOUR SUPPORT MEANS EVERYTHING!

We thank you for keeping St. Charles at the forefront in this season of giving and for your generous financial support to help St. Charles be the light of Christ in our community! **Please drop off year-end donations to the Parish Office no later than Wednesday, December 27 to allow adequate time to record contributions for 2023.** For information or questions about contributing an end-of-year donation to St. Charles Parish and School, please contact parish@stcharleshartland.org or 262-367-0800.



As of November 6, 2023, St. Charles has reached 94.86% of our goal for the Catholic Stewardship Appeal. Thank you to all who have contributed.

ADVENT AND CHRISTMAS MASS OBLIGATIONS

This is a very special year, since Christmas falls on a Monday. On the weekend of December 23-24 we will celebrate the Fourth Sunday of Advent, wear purple, and light the last candle of the Advent wreath. This is our final opportunity to prepare our hearts for the coming of Christ on Christmas! Then, beginning that same afternoon, Catholics may celebrate the Solemnity of Christmas any time after 4:00 pm. **December 24 Mass times at St. Charles include the Family Mass at 4:00 pm, followed by 6:00 pm and 9:00 pm. On Christmas Day, Masses are at 7:00 am and 9:00 am.**

We will be blessed by the offerings of many music ministers, including Cantors, Choirs, and special instrumentalists. Come early to get a good seat and enjoy the many prelude concerts. We hope you will come join us as we celebrate our last Christmas in our current church!

CHRISTMAS MASS *Planner 2023*



Choose **ONE** 4th Sunday of Advent Mass (**green**)
AND **ONE** Christmas Mass (**red**) to attend.



VISIT TO OUR MISSION PARISH

Members of St. Charles Parish recently traveled to the Dominican Republic to visit with our Mission Parish. We toured the villages that comprise the parish of La Sagrada Familia and celebrated Mass in the village of Canada de Piedra where our chapel was built. As Father Ken had told us, not only should we build ourselves a new church, we should also build one for those without one. Fr. Ariel baptized three children in the new chapel while we shared Mass with our fellow parishioners. The chapel had already been used as a shelter during two previous hurricanes, and is also a gathering place for education and other village activities. During Lent our group of travelers will share their experiences and our plans to continue our connection to this parish. Please keep our mission parish in your prayers. Also if you would like to donate please see the almsgiving flyer in this weekend's bulletin.

FORMED IS PERFECT FOR YOUR ADVENT PREPARATION!

St. Charles happily provides YOU with free membership through our parish subscription to FORMED a premier Catholic streaming service. **Visit <https://formed.org/signup> to create your free login and enjoy!**

THIS WEEK ON FORMED

Week of December 03, 2023



What Is the Immaculate Conception?
Join Drs Tim Gray and John Sehom as they examine Mary under her title of the Immaculate Conception. This dogma of the Catholic faith, promulgated in 1854 by Pope Pius IX, speaks of Mary's conception and what it means to the Church.



St. Nicholas Day | Catholic All Year at Home w/ Kendra Tierney
Kendra shares her favorite recipes and traditions for celebrating the feast of St. Nicholas (a.k.a. Santa!). Learn how to make mulled wine and cider, speculaas cookies, and deep-fried Dutch meatballs.

ST. VINCENT de PAUL SOCIETY



FOOD PANTRY NEEDS: 5lb Bags of Flour, Brown Sugar, White Rice, Pancake Mix, Syrup, Canned Chicken, Ketchup

On this First Sunday of Advent, there is an Advent spirit in the heart of every person. It is one of longing, of yearning for a fulfillment that somehow lies beyond us; for we long for the coming of the Lord. As we begin Advent we are called to "Be Watchful! Be alert!" as we stand in the joyful anticipation for the grace of Christmas to once again bless our lives. Your generous gifts of food for the pantry or donations to our general fund will help the poor to celebrate the grace of God's love this Christmas.

If you are in need of assistance or know someone who is in need, please contact us at 262-367-0800. We would like to help! The St Charles SVDP Food Pantry is located at 229 Lawn Street, Hartland. It is open every Tuesday morning between 10am and noon. It is also open on the second and fourth Tuesday evenings of the month between 5:30pm and 7pm.



SUPPORT ST. CHARLES AND DO YOUR HOLIDAY SHOPPING!

One of the simplest ways to financially support St. Charles Parish and School without spending an extra dime is through RaiseRight, formerly ShopWithScrip. Your everyday expenses for groceries, gas, gifts and dinner out can give back 1% to 15% of your purchase cost to St. Charles. By buying Scrip cards at the parish or online, you are providing a financial boost to St. Charles without spending a single penny more. Some cards are even easily refillable online.

To help with your holiday gifting, you can get your Scrip gift cards after all weekend Masses through December 16 & 17 in the Parish Office.

Thank you for supporting St. Charles!



"The true treasures of the Church"

St. Lawrence

THERE IS STILL TIME TO MAKE YOUR PLEDGE COMMITMENT!

If you have already submitted your pledge commitment card to support our parish operations, thank you! If you have not, it's not too late. You may drop off your card at the Parish Office, mail them to the parish or go to our parish website to make your pledge commitment online.



BULLETIN DUE DATES!

If you have an event(s) you would like to publicize in a November, December and/or January bulletin, please submit your information by the due dates listed below. This earlier deadline is due to the printer's holiday schedule. **Please submit all articles by 8:00 am on the due date.** Thank you!

- Dec. 17th Bulletin information is due Monday, Dec. 4th
- Dec. 24th Bulletin information is due Monday, Dec. 11th
- Dec. 31st Bulletin information is due Monday, Dec. 18th
- Jan. 7th Bulletin information is due Wednesday, Dec. 20th
- Jan. 14th Bulletin information is due Wednesday, Jan. 3rd



ST. CHARLES NIGHT AT CULVER'S IN HARTLAND

Monday, December 4th from 5:00-8:00 pm

Mention that you are with St. Charles, and the School receives 10% of the evening's sales! Thanks for your support!

Bulletin Advertisers of the Week Please support our advertisers!



Hartland Family
CHIROPRACTIC
211 Cottonwood Ave, Hartland
(262) 367-7424
www.hartlandchiro.com



BEING A GOOD STEWARD



FELLOWSHIP WEEKEND DECEMBER 16 & 17

Join fellow parishioners for conversation and a donut/snack at Fellowship Weekend in the Parish Hall, December 16 and 17 after all the Masses. A big thank you to St. Vincent de Paul (SVdP) who will be hosting this event and for the sponsors supporting it! The SVdP members will also be there to give information on the how you can help the needy and/or how you can become a member. Feel free to talk to one of the members serving to find out more about St. Charles' St. Vincent de Paul Society.



LAKE COUNTRY BREAD OF LIFE COMMUNITY MEAL AT ST. CHARLES

Thursday, Dec. 14th
Doors open at 4:30 pm
Dinner is served at 5:30 pm

This month St. Charles Thursday Morning's Men's Group will provide and serve the food for the meal. The meal will be a Christmas celebration with holiday ham and sides.

St. Charles Outreach Services Team will oversee the event. If you would like to volunteer or have any questions, please contact the Parish Office or humanconcerns@stcharleshartland.org.



2023 CHRISTMAS PARTY FOR USHERS

Wednesday, Dec. 13th at 6:30pm
in the Borromeo Room

Everyone who helps to usher at church including full-time, part-time and sometimes.

Come for food, refreshments & camaraderie.

CIRCLE OF LOVE

ALL Circle of Love Gifts are due back **TODAY**, Sunday, December 3rd by **NOON** in the Borromeo Room.

SPONSORS: Please pick up your gifts that you requested **TODAY** between 12:30 pm and 2:00 pm in the Borromeo Room.

If you have any questions, please call/text Kathy Gillstrom at 262-370-3306.



CHRISTMAS CHURCH FLOWERS

The beautiful decorations in our Church during the Christmas season lift our spirits closer to the Lord Jesus as we celebrate His birth. They help us to pray more deeply and feel closer to one another. We invite you to donate toward our decorations by making an offering in memory of a loved one, in thanksgiving for a blessing in your life, for a special intention or simply as a free-will offering. We will list the names of the people remembered, the blessings recalled or the intentions held in your hearts in the bulletin on Jan. 10th. However, we will not print the donor's name nor the amount given. **NEW this year, you can give by the offertory envelopes mailed to your home if you give by envelope. You can list your information on the backside of the envelope.**

If you wish to make this offering, please fill out this form or mailed offertory envelope and return it with your donation to the Parish Office by Wednesday, Dec. 27th.

Name of Donor _____ Phone _____

In Memory of those Deceased _____

Blessing Recalled _____

Special Intention _____

Amount Enclosed \$ _____

PLEASE PRINT –THANK YOU





Ground Crew Service

Full Service Landscape Management

262.821.9680

www.groundcrewservice.com

Hartland Terrace
Assisted Living

- RN Lead 24-Hour Elite Care Team
- Full Continuum of Care • Memory Care
- All Inclusive Pricing • Private Studios
- Family Centered Care Model

327 North Avenue • Hartland | 262-369-4391
www.hartlandterrace.com

TODD WANGERIN
ELECTRIC, Inc.

Free Estimates - Licensed - Insured
Over 20 years experience

Todd Wangerin 262-719-4411
twelectric4411@att.net

ALTERNATIVE
ROOFING & CONSTRUCTION

FREE ESTIMATES!

LOCAL CONTRACTOR
414-745-3365
wisconsinroofers.com

R&R
INSURANCE

Rick Kalscheuer
Parish Member
MyKnowledgeBroker.com
800.566.7007

we know.

Carrier
Turn to the experts

Pat's Heating & Air Conditioning
262-567-7499
OCONOMOWOC
www.patsheating.com

Holzauer, Hewett & Barta S.C.
Orthodontic Care For Children And Adults

Daniel Holzauer DDS MS | Charles Hewett DDS MS | Joshua Barta DDS MS

520 Hartbrook Dr., Hartland
2516 N. Grandview Blvd, Waukesha
10225 W. Capitol Dr., Wauwatosa

262-567-7076
262-547-6365
414-463-5700

BUNZEL'S OLD FASHIONED MEAT MARKET

Fresh Custom Cut Choice Meats
Party Trays • Catering

Thank You For Supporting A Family Tradition
9015 W. BURLEIGH 873-7960
www.bunzelmeats.com

DOES YOUR NONPROFIT ORGANIZATION NEED A NEWSLETTER?

Engaging, ad-supported print and digital newsletters to reach your community.

Visit Ipicommunities.com

OUR COMMUNITY NEWSLETTER
NETWORK EDITION

Scan to contact us!

KOWAL INVESTMENT GROUP
The Retirement Specialists

Aaron T. Kowal, CFP®
W238N1660 Busse Rd., Ste. 100, Waukesha, WI 53188
262-522-4040
www.kowalinvestmentgroup.com

Kowal Investment Group, LLC ("Kowal") is a Registered Investment Advisor ("RIA"), with the U.S. Securities and Exchange Commission ("SEC"). Kowal provides investment advisory and related services for clients in State of Wisconsin and other states.

Hartland Family CHIROPRACTIC
211 Cottonwood Ave, Hartland
(262) 367-7424
www.hartlandchiro.com

FOOT & ANKLE
Associates of Wisconsin
Parish Member
Dr. Amy Galati
Call: (262) 542-3779
www.footandanklewi.com

AMERICAN LEGION POST 294
231 Goodwin Ave.

Remember **VETERANS DAY**, Nov. 11th.

Fly the Flag - Ceremonies at Post 10:30 AM

Flanagan-Dorn Post 294 of the American Legion also wishes all Vets and Members of St. Charles a **Very Happy Thanksgiving & the Merriest of Christmases**. Please remember those who currently are serving, won't you?

See us @ wilegion.org
414-975-5951 or 262-549-6463

Culver's
701 Industrial Ct., Hartland
262-367-5800

TOWN BANK
A WINTRUST COMMUNITY BANK
800-433-3076
www.townbank.us

MICHAEL J. FINN S.C.
ATTORNEY AT LAW
PARISH MEMBER
262-367-8485
mjfinnsc@sbcglobal.net
163 E. Capitol Dr., Hartland, WI 53029

VISU-SEWER, INC.
262-695-2340
Professional Sewer Inspection, Maintenance and Rehabilitation Services
Parish Members
www.visu-sewer.com

catholicmatch® Wisconsin

CatholicMatch.com/WI

LAKESIDE INTERNATIONAL TRUCKS **BADGERLAND IDEALEASE**

Offering Wisconsin businesses transportation solutions nearly 40 years.

- Truck Sales
- Parts
- Service
- Body Shop
- Leasing & Rental

SERVING: Milwaukee • Madison • Racine
West Bend • Sheboygan • Janesville • Monroe • Rockford

Bill Reilly, Jr.
Parish Member

CHARLES
St. Charles School... We choose Christ in learning, living, & values in the light of our faith.
262-367-2040
www.stcharlesschoolhartland.com

JENSON MOTORS
Auto - Truck Repair
Hours: Mon-Fri 7:30-5:30
Proprietor: Guy Jenson
262-367-5556
364 Cottonwood Ave., Hartland, WI

PROMACH Performance, Packaged

CL&D **\$2,000 RETENTION BONUS IN THE FIRST YEAR!**
\$20+/HOUR
cldgraphics.com/careers

EVERT-LUKO FUNERAL HOME
& CREMATION SERVICES

Guiding with skillful hands and soulful hearts
262-367-2156
www.evertlukofuneralhome.com

KLINK'S KARPETS, INC.
Hartland's Floor Covering Center
Family Owned & Operated for over 47 Years
Carpeting & Hard Surfaces
107 North Ave. Hartland, WI
367-4670 Parish Member

We help real estate investors invest in passive assets and defer tax.
If you are planning on selling your investment property, let's talk.

BRANDON BRUCKMAN
414-882-8738
www.investwithinsight.com

Broaching Technologies
Machines • Tooling • Subcontracting

Blind and Thru Hole: www.keyway-spline-broaching.com
Broaching, Splining, Keyseating, P (262) 820-1200
Slotting, Shaping sales@broachingtech.com

DAVE PERRY
heating • cooling • air conditioning

Proudly Serving the Lake Country Area for more than 20 years
Heating • Air Conditioning • Geothermal
New Construction • Replacement
262.966.1959
www.daveperryheatingandcooling.com

INSIGHT INVESTMENT ADVISORS

LET'S GROW YOUR BUSINESS
Place Your Ad Here and Support Our Parish!

CONTACT ME
Jeff Tkachuk
jtkachuk@4LPi.com • (800) 950-9952 x2513

Generations DENTAL

Jim Muenzenberger, D.D.S.
and Kelly Newman, D.D.S.
Parish Members
GenerationsDentalHartland.com

Sprung Heating & Pump Service LLC
www.sprungheating.com

HVAC • Plumbing • Well Pumps • Generators

Karl Sprung
Office 262.578.5853
PO BOX 3024 Mertens, WI 53054

Lake Country Eye Care

580 Hartbrook Dr. • Hartland, WI
Amber A. Dentz, OD - Parishioner
www.lakecountryeyecare.com
262-367-6610



For ad info. call 1-800-950-9952 • www.4lpi.com

St. Charles Catholic Church, Hartland, WI

B 4C 01-0639

Helping you achieve financial dreams



James Dunn
Managing Director – Financial Advisor
(262) 395-1101
www.dunninvestmentmanagement.com



Lake Five
LANDSCAPE SUPPLY LLC
Mulch • Firewood • Nursery
262-777-1523
W275N7813 Lake Five Rd Hartland, WI
LakeFiveSupply.com

Lake Country
Bed Barn
Good Morning Store
Mattress & Furniture Store
Downtown Hartland
Parish Member

Brenna Fischer
Hairstylist
262-844-5934
601 Ryan St., Ste 302
PEWAUKEE WI
brennafischer.glossgenius.com

REICHL & KOLSTAD
ORTHODONTICS

Dr. Peter Reichl & Dr. James Kolstad
look forward to meeting you!

Offering Traditional Braces & Invisalign
Located in Waukesha, Mukwonago & Hartland
262-547-2827
www.ReichlKolstadOrtho.com

WISE
DESIGN BUILDERS
262-790-4444
Parish Members
www.wisedesignbuilders.com

Lake Country Remodeling Specialist

MY OTHER GARAGE
SELF STORAGE
262-966-9000
1 Mile East of North Lake

CARPET PLUS, INC.
We Bring the Showroom to You!
(414) 573-0105
Proudly Serving Crusader Nation for over 20 years!
Dan Taylor, Parish Member

COURI
INSURANCE
AGENCY
Protection for the Unexpected™

Coverages
IMPORTANT
Pricing
IMPORTANT
Low Costs
GREAT COVERAGES
Jerry & Judie Couri
262-548-8077 • couri.com

DON CULL EXCAVATING
W298 N9248 Center Oak Rd
Septic & Mound Systems Grading
966-7038
MPRS 221589

CCI
Corporate Contractors Inc.
CCIWI.COM

Angela Isherwood
Owner & Luxury Travel Designer
Parishioner
262.229.9271
Angela@OliveAndAtlasTravel.com
www.OliveAndAtlasTravel.com

SPORTS GRILL

PIZZA • FRIDAY FISH FRY • SANDWICHES
*\$5.00 OFF ANY 16" PIZZA
*SUNDAY'S "KIDS EAT FREE" WITH ADULT PURCHASE

We do Parties & Catering!
Not valid with any other offers or coupons
369-0079
300 COTTONWOOD • HARTLAND
PARISH MEMBER

IF YOU LIVE ALONE

MDMedAlert!™
As Low As **\$19.95** mo.
CALL NOW! **800.808.9294** • md-medalert.com

- ✓ Ambulance/Police
- ✓ Family/Friends
- ✓ GPS & Fall Alert

LET'S GROW YOUR BUSINESS
Place Your Ad Here and Support Our Parish!

CONTACT ME Jeff Tkachuk
jtkachuk@4LPi.com • (800) 950-9952 x2513

The GOOD DENTIST
Dr. Marta Ostromecki, DDS Parishioner
(262) 223-3169
www.tgdentist.com
Always Accepting New Patients
N67W28025 Sussex Rd., Suite 100, Hartland, WI



PAUN Construction
Specializing in Masonry Residential & Commercial
W300 N7741 Christine Ln., Hartland, WI 53029
Robert J. Paun (262) 326-8043
www.paunconstruction.com
mail@paunconstruction.com

ADT-Monitored Home Security
Get 24-Hour Protection From a Name You Can Trust

- Burglary
- Fire Safety
- Flood Detection
- Carbon Monoxide

833-287-3502

What Will Be Your Legacy?

If you value your faith and your family, I welcome the opportunity to share my faith-based perspective in union with my financial experience in order to co-create a personal legacy strategy. I can assist with: Portfolio Management | Retirement Planning | Financial & Legacy Strategies | Special Needs Planning

Kurt Maltby, CFP®, ChSNC®
CERTIFIED FINANCIAL PLANNER™
Assistant Vice President, Financial Advisor

Morgan Stanley
20975 Swenson Drive, Waukesha
Phone: (262) 523-8303 | NMLS # 1504808
advisor.morganstanley.com/the-riverwood-wealth-management-group

Parishioner

Morgan Stanley and its Financial Advisors do not provide tax or legal advice. Individuals should seek advice based on their particular circumstances from an independent tax advisor. Morgan Stanley Smith Barney LLC, Member SIPC. CIRC818748 08/18

Please Support these
CONTRACTORS
Thank You to these contractors helping St Charles grow!

NELCO ELECTRIC, INC.
GERMANTOWN, WI
Commercial • Industrial • Residential
24 Hour Service **262-502-9950**
WWW.NELCOELECTRIC.COM
Barb Jarchow Parishioner

DFI MASINI, INC.
262 / 820-8300

SEWAGE AND WATER TREATMENT
WHEN YOU EXPECT THE BEST

Wolf Electric LLC
Commercial, Industrial, Residential
Garrett Wolf • Master Electrician/Parishioner
Commercial • Industrial • Residential
(414) 899-3608 • www.wolfelectricllc.com

Join our Team!

Serve your local Catholic Community, become an agent with the Knights of Columbus!

Contact us at www.kofcwi.org
Life Insurance • Disability Income Insurance
Long Term Insurance • Retirement Annuities

Tim J. Nowak, FICF
General Agent
(920) 810-6188
timothy.nowak@kofc.org

Knights of Columbus

FRONTIER
TITLE & CLOSING SERVICES

1130 James Drive, Hartland, WI 53029
Office: 262-361-4466 Fax: 262-361-4462
www.frontiertitlellc.com

Frontier Title & Closing Services, LLC
Lake Country's Most Experienced
Title & Closing Company
Specializing in Residential, Commercial & New Construction Transactions
Serving the Real Estate Community!

Custom Asphalt Solutions Since 1941

WOLF PAVING

Parking Lots
Private Roads
Walking Paths
Athletic Courts
wolfpaving.com

zimmerman
ARCHITECTURAL STUDIOS, INC.

300 Silver Sky, Verona Avenue
Milwaukee, WI 53233 | zimmerman.com

TELEPHONE (414) 478-9500
FACSIMILE (414) 478-8584