

*At St. Charles, all are invited to
meet Christ, know Christ,
love Christ and serve Christ.*

**December 10, 2023
SECOND SUNDAY OF ADVENT**

Sacrament of Baptism



**Theodore Victor S.,
son of Richard and Madelyn S.**



**Walker Terence O.,
son of Gregory and Hannah O.**



**Aspen Jordan A.,
daughter of Trenton T. and Melissa A.**



**Lucas Donovan K.,
son of Jason and Nicole K.**



**Eliza Layne M.,
daughter of James and Lauren M.**

*Congratulations
to all our newest
St. Charles Parish
members and their
families!*



2ND SUNDAY OF

Advent

A Time to Prepare

*John the Baptist appeared in the desert proclaiming a
baptism of repentance for the forgiveness of sins. (Mk 16:4)*

St. Charles Parish & School | 313 Circle Drive, Hartland, WI 53029

262-367-0800 | www.stcharleshartland.com | email: parish@stcharleshartland.org



WELCOME TO ST. CHARLES - WE ARE HERE FOR YOU



PASTOR
Fr. Ken Omernick



ASSOCIATE PASTOR
Fr. Ariel Orozco

ST. CHARLES STAFF TEAMS

ASSOCIATE PASTOR & Becoming Fully Catholic:
Fr. Ariel Orozco, aorozco@stcharleshartland.org

TEACHING PARISH SEMINARIAN:

Deacon David Sweeney, dsweeney@sfs.edu
Timothy Heyrman, theyrman@sfs.edu

SCHOOL TEAM 262-367-2040

Principal/School Team Lead: Dan Garvey, Ext. 208,
dgarvey@stcharleshartland.org
Advancement Officer: Allison Caswell, Ext. 202,
acaswell@stcharleshartland.org
School Administrative: Lisa Moehrke, Ext. 206,
school@stcharleshartland.com
School Administrative: Karen Dejewski, Ext. 206,
school@stcharleshartland.com
School Administrative: Nina Wolf, Ext. 206,
school@stcharleshartland.com

WORSHIP TEAM

Worship Lead: Peg Kasun, Ext. 225,
pkasun@stcharleshartland.org
Liturgist: Elizabeth Thompson, M.Div., 262-367-6704
ethompson@stcharleshartland.org
Music Director: Dr. Aaron Mathews, Ext. 225,
amathews@stcharleshartland.org
Wedding Coordinator: Dee Anne Hamer, Ext. 215,
dhamer@stcharleshartland.org

DISCIPLESHIP TEAM

Discipleship Team Lead: Deacon Jon Gabik, Ext. 201,
jgabik@stcharleshartland.org
Adult Discipleship Lead: Maria Notch, Ext. 220,
mnotch@stcharleshartland.org
Adult Discipleship Coordinator: Hannah Osborne, Ext. 220,
hosborne@stcharleshartland.org
Children's Discipleship Co-Lead: Shelly Buchan, Ext. 205,
sbuchan@stcharleshartland.org
Children's Discipleship Co-Lead: Alicia Van Hecke, Ext. 205,
avanhecke@stcharleshartland.org
Student Discipleship Lead: Nick Scanlan, Ext. 209,
nscanlan@stcharleshartland.org
Student Discipleship Assistant: Dominic Van Hecke, Ext. 221,
lifeteen@stcharleshartland.org

Baptism Coordinator: Mary Jo Romportl, Ext. 200,
mjromportl@stcharleshartland.org

OPERATIONS TEAM

Operations Manager/Team Lead: Deacon Jon Gabik,
Ext. 201, jgabik@stcharleshartland.org
Facilities Manager: Mike Cattani, Ext. 210,
mcattani@stcharleshartland.org
Maintenance Manager: Tim Orzechowski, Ext. 217,
torzechowski@stcharleshartland.org
Accounting: Dee Anne Hamer, Ext. 215,
dhamer@stcharleshartland.org
Administrative: Brenda Zingsheim, Ext. 215,
bzingsheim@stcharleshartland.org
Cornerstone/Safeguarding: Karen Dejewski, Ext. 215,
cornerstoneproject@stcharleshartland.org

COMMUNICATIONS & STEWARDSHIP TEAM

Communications & Stewardship Team Lead: Allison Caswell,
Ext. 202, acaswell@stcharleshartland.org
Assistant to the Pastor: Terrie Carew, Ext. 224,
tcarew@stcharleshartland.org
Graphic Design Specialist: Renee Krier, Ext. 224,
rkrier@stcharleshartland.org
Administrative: Kathy Gillstrom, Ext. 200,
kgillstrom@stcharleshartland.org
Administrative: Mary Jo Romportl, Ext. 200,
mjromportl@stcharleshartland.org

PARISH OFFICE: 262-367-0800,
Mon. - Fri., 8 am - 4 pm

EMAIL US: parish@stcharleshartland.org

PARISH SCHOOL: 262-367-2040,

school@stcharleshartland.org

WEBSITE & LIVESTREAM:
www.stcharleshartland.com or
scan QR code with phone camera



WELCOME TO ST. CHARLES - WE ARE HERE FOR YOU

SATURDAY MASS OF ANTICIPATION: 5:00pm

SUNDAY MASS TIMES: 7:00am, 9:00am, 11:00am & 6:00pm

WEEKDAY MASS: Monday - Friday: 8:30am & Saturday: 8:30am

TUESDAY TRADITIONAL MASS

Monthly on the fourth Tuesday at 5:30 pm

EUCCHARISTIC ADORATION

Monday: 2:00pm – 9:00pm

Tuesday: 2:00pm – 10:00pm

Wednesday: 7:00 – 8:20am and
9:00am – 3:00pm

Thursday: 7:00 – 8:20am and
9:00am – 5:00pm

Friday: 9:00am – 6:00pm



RECONCILIATION

Saturdays: 3:00pm - 4:00pm & Thursdays: 5:00pm - 6:00pm

SACRAMENT OF THE SICK

By appointment with Fr. Ken or Fr. Ariel (Call the Parish Office).

ANOINTING MASSES: 2nd & 4th Fridays every month at 8:30 am

OUTREACH SERVICES TEAM: Terri Blazek: 262-367-7608,
jtblazek@wi.rr.com

TO ASK FOR PRAYERS or to be added to the email list, please email:
prayernetwork@stcharleshartland.org

FOR EMERGENCY PRAYERS, please email:

emergencyprayers@stcharleshartland.org

Printed weekly prayer sheets are available on the information wall.

ST. VINCENT DE PAUL: if you need food, shelter or assistance call
262-367-0800 (Parish Office)

NEED HOME COMMUNION:

For information call 262-367-0800 (Parish Office)

Mass Intentions for the Week of December 10th



Sunday, December 10 ~ Second Sunday of Advent

7:00 am † Barbara Birschbach

9:00 am † Edwin Miller

11:00 am Living and Deceased Members of St. Charles

6:00 pm † Zephyr Benoit

Monday, December 11

6:30 am † Louis Enderlin

8:30 am † Jim McLoone

Tuesday, December 12

6:30 am † Mark Wisniewski

8:30 am † Krystina Finn

Wednesday, December 13

6:30 am Special Intention

8:30 am † Dolores Lompa

Thursday, December 14

6:30 am † Phyllis Peterson

8:30 am † John Byron Burns

Friday, December 15

6:30 am Living and Deceased Members of the Young at
Heart Group

8:30 am † Bob Eberhardy

Saturday, December 16

8:30 am † Margaret Collins

5:00 pm † Ron & Doris Frisbee

Sunday, December 17 ~ Third Sunday of Advent

7:00 am † David J. Graff

9:00 am † Parents of Jim & Shirley Hallada

11:00 am † Amy (Lamerand) Zott

6:00 pm Living and Deceased Members of St. Charles

Please pray for the repose of the soul of

Ronald Kroll

May his soul and the souls of all the faithfully departed
REST IN CHRIST'S PEACE.

One of the easiest ways to support St. Charles Parish and School is through the secured online e-giving system.



PARISH SUPPORT
THRU NOVEMBER 12TH

FISCAL YEAR
JULY 1 THRU JUNE 30

2022 - 2023

Envelopes.....	\$28,555.01
Offertory.....	\$3,274.50
Weekend Total	\$31,829.51
E-Giving.....	\$19,921.55
YTD	\$847,076.10

2021-2022

Envelopes.....	\$33,917.00
Offertory.....	\$2,627.62
Weekend Total	\$36,544.62
E-Giving.....	\$18,952.25
YTD	\$767,153.74



WEEK 2 | PEACE

THIS WEEKEND'S GOSPEL MEDITATION 2ND SUNDAY OF ADVENT

We like to think we are totally free, but the bitter truth is we simply are not. Or better put, our freedom is limited on every side — by governments, corporate giants, physical and mental frailties, genetic shortcomings, the boundaries of time and space, and above all, the burden of our sins and pending deaths. In our day, we are perhaps particularly aware that we are not free to disconnect from the technocratic rulers of the air. If you doubt me, try not paying your internet bill and see what happens. We are not totally free.

It's nothing new, of course. In Jesus' day, everyone felt the crushing weight of the Roman Empire. You can say you're free all you want. But try not paying your taxes to Rome and see what happens.

Once we feel this burden in our own lives — however it comes — we are ready to hear the stunning announcement that commences Mark's gospel, "The beginning of the Gospel of Jesus Christ, the Son of God." It's not a simple perfunctory introduction but a dramatic announcement of new freedom. The word "gospel" was a political, even military, term. It meant: a great victory has been won and a new king is in charge. This Jesus — not the Roman emperor — is God's son, and he has defeated all that crushes human freedom. It's time to follow him and be truly free. This week let's refuse to submit our freedom to false rulers — especially that of sin. And let's rejoice that Christ is coming to make us perfectly free from all our oppressors.

~ Father John Muir

©LPi

PRAY WITH SCRIPTURE

Lectio Divina

15 minutes each day spent in God's presence — reading, reflecting, responding and resting with his Word — adds up to 90 hours in one year. That is time well spent and a testimony to how a little at a time turns into something remarkable!

Sunday, December 17th Readings

**Sunday: Is 61:1-2a, 10-11/Lk 1:46-48, 49-50, 53-54
(Is 61:10b)/1 Thes 5:16-24/Jn 1:6-8, 19-28**

To find readings for the weekdays and/or Feast Days, please visit
<https://bible.usccb.org/bible/readings>.

Reflection questions for Sunday, December 17th

- Isaiah rejoices over God's call in his life and the promise of restoration for all nations. As we continue in the season of Advent, what has brought some joy to you or your family?
- Paul encourages the Thessalonians to be people of prayer and joy, open to the work of the Holy Spirit in their lives. Is there anything recently that has brought you joy?
- John presents the religious leaders of Jerusalem as puzzled and uncertain as to who John the Baptist was. How do you approach friends or family in your life who are confused or questioning the faith?

READ. REFLECT. RESPOND. REST.



Cut out and keep in your Bible for reference!



ADULT FORMATION

DECEMBER ADULT DISCIPLESHIP HUDDLE

Adults of the parish are invited to the December Adult Discipleship Huddle on **Thursday, December 14th!** This is an opportunity for all to come and to learn more about their faith. This month we will be discussing "Life & Death - the Incarnation of Christ at Christmas and Grief around the Holidays." Come to either the morning session at 11:30am in the narthex or the evening session at 6:30pm in the LifeTeen Cafe. Contact Maria Notch with any questions: mnotch@stcharleshartland.org. Hope to see you there!



ADVENT PRAYER OPPORTUNITIES

During the Season of Advent, St. Charles Parish provides many opportunities for parishioners to pray. Please come and join us.

DAILY MASS

- 6:30 am, Monday through Friday (Dec. 4 - Dec. 22)
- 8:30 am, Monday through Saturday (Dec. 4 - Dec. 23; resumes on Dec. 26)

SACRAMENT OF RECONCILIATION (two Priests during these times)

- Every Thursday, from 5:00 pm - 6:00 pm
- Every Saturday, from 3:00 pm - 4:00 pm

EUCCHARISTIC ADORATION

- Monday, Dec. 11 & 18, 2:00 pm to 9:00 pm
- Tuesday, Dec. 12 & 19, 2:00 pm to 10:00 pm
- Wednesdays, 7:00 am to 8:15 am & 9:15 am to 3:00 pm
- Thursday mornings, 7:00 am to 8:15 am & 9:15 am to 5:00 pm
- Every Friday, 9:15 am to 5:00 pm (Adoration on Friday, Dec. 15 will begin at 12:30 pm due to the School Reconciliation Service)

MORNING PRAYER

- Monday through Friday, 7:30 am
- Saturdays, 8:00 am

ROSARY

- Monday through Friday, 8:00 am

CHRISTMAS MASS SCHEDULE

(There are 3 Masses on Christmas Eve and 2 Masses on Christmas Day)

Sunday, Dec. 24

- 4:00 pm Children's Mass
- 6:00 pm
- 9:00 pm (Incense used)

(The morning Masses on December 24th are for the Fourth Sunday of Advent; they do not meet the Christmas Obligation)

Monday, Dec. 25

- 7:00 am
- 9:00 am (Incense used)

THE SOLEMNITY OF MARY MASS SCHEDULE

(This is not a day of Holy Day of Obligation)

Monday, Jan. 1, 2024

- 9:00 am
- 11:00 am (Incense used)



ADVENT: EXERCISING GOOD STEWARDSHIP OF OUR SPIRITUAL LIVES

When you say the word "Advent," what immediately pops into mind? A feast of color, a traditional manger scene bathed in soft candlelight, glistening snowflakes falling on festive trees, a yearning for the One who is to come.

But sometimes, the season brings other images: crowded stores, treats that tempt us to too many calories, limitless to-do and to-buy lists. Yet in the back of our minds, we hear the call to conversion. Christ is calling us to be good stewards of all that we have and all that we are. How can we keep Advent in such a way that it is a time to focus on the fundamentals of stewardship; of spiritual growth and preparation for the coming of Jesus Christ? Here are a few suggestions, not meant to be another to-do list, but rather a way to remind ourselves daily of our call to prepare a way for the Lord in our lives.

1. Begin the season with a list to prioritize what you really want spiritually, and in relation to friends and family, from Advent. Discard all the "extras" and the fantasy of the perfect Hallmark Christmas. List clear goals that bring growth, peace, and quality time.

2. Take time to read the daily readings each day of Advent. The beautiful words of Isaiah are guaranteed to inspire, and the commitment will guarantee you a bit of quiet and reflective time.

3. Do you send Christmas cards? Even if they are the standard signature only or newsletter variety, try to personalize one a day, writing a nice note to an elderly relative or a friend you haven't seen in a long time.

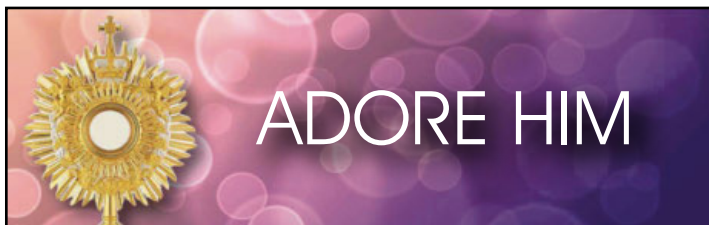
4. Embrace the Sacrament of Reconciliation. This will encourage you to reflect on your life, your gifts and where you fail to utilize them for the good of others. It's a beautiful preparation for the coming of Jesus and the beginning of a new year.

5. Pray for patience. As you drive over icy streets or navigate through a crowded store, take time to pray for those around you and for those who struggle with much less. Become aware of people around you and lift them in prayer rather than see them as obstacles to your goals.

6. In the midst of a season of abundance, do not forget the poor in your community.

*International Catholic Stewardship Council
December 2023 • e-Bulletin*





ADORE HIM

All are invited to come and spend some quiet time in prayer in the presence of Our Lord:

Monday: 2:00 PM – 9:00 PM

Tuesday: 2:00 PM – 10:00 PM

Wednesday: 7:00 – 8:20 AM and 9:00 AM – 3:00 PM

Thursday: 7:00 – 8:20 AM and 9:00 AM – 5:00 PM

Friday: 9:00 AM – 6:00 PM

We currently have open slots and hope you are inspired to spend time with the Lord.

We ask for TWO people to commit to adoring our Lord for every scheduled hour each day. **Visit the website to sign up!**

A STEWARDSHIP PRAYER for December

Come Lord Jesus!

Make us good stewards of Advent. Strengthen our faith; calm our fears.

Come Lord Jesus!

We hear John the Baptist's cry. Open our hearts. Give us the humility to repent.

Come, Lord Jesus!

Let us walk in your light! Show us how we prepare your way; and make straight your paths.

Come, Lord Jesus!

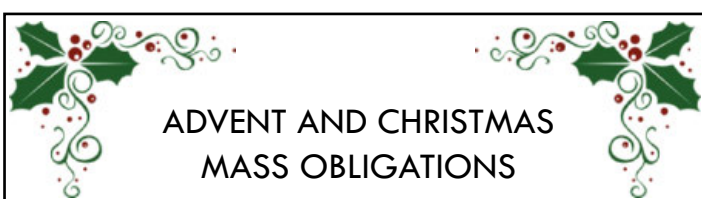
We give you thanks and praise, for the shining star and angelic host, for Mary and Joseph, good stewards, both.

Come, Lord Jesus!

We rejoice and are glad! For the Good News you bring And God's glory you revealed.

Come, Lord Jesus!

Amen!



ADVENT AND CHRISTMAS MASS OBLIGATIONS

This is a very special year since Christmas falls on a Monday. On the weekend of December 23-24, we will celebrate the Fourth Sunday of Advent, wear purple, and light the last candle of the Advent wreath. This is our final opportunity to prepare our hearts for the coming of Christ on Christmas! Then, beginning that same afternoon, Catholics may celebrate the Solemnity of Christmas any time after 4:00 pm. **December 24 Mass times at St. Charles include the Family Mass at 4:00 pm, followed by 6:00 pm and 9:00 pm. On Christmas Day, Masses are at 7:00 am and 9:00 am.**

We will be blessed by the offerings of many music ministers, including Cantors, Choirs, and special instrumentalists. Come early to get a good seat and enjoy the many prelude concerts. We hope you will come join us as we celebrate our last Christmas in our current church!

CHRISTMAS MASS *Planner 2023*



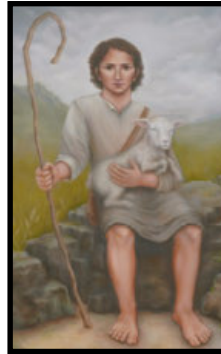
Choose ONE 4th Sunday of Advent Mass (purple)
AND ONE Christmas Mass (red) to attend.



REGISTER FOR THE 2024 SKI CLUB SEASON

**Students, parents, and all parish members
are welcome to join!**

First-time beginners for skiing and snowboarding are also encouraged to sign up. Lift tickets, rentals, and optional lessons are at great group rates! The club meets at Little Switzerland in Slinger, and our event dates are on January 12, January 26, February 9, and February 23 from 4-9:30 pm. Visit the News article on our website for more information and to register. **Deadline to register is Wednesday, December 13th.**



Catechesis of the Good Shepherd

Montessori Religious Education 

CATECHESIS OF THE GOOD SHEPHERD (CGS) CORNER

Jesus says, "I am the Light of the World."

Light is everywhere in the Bible and in Mass, representing God's presence, truth, guidance, and salvation. In creation: God said, "Let there be light." In the Psalms: "Thy word is... a light unto my path" and "The Lord is my light and my salvation." In the Transfiguration, Jesus' "face shone like the sun and his clothes became white as light." In Mass, candles are used to highlight God's presence in the Word and on the Sacraments. During a baptism, the Easter candle is lit, and this light is shared with the newly baptized to show that they have just received His light and to remind us of our baptisms, as well. During Advent, there is a particular theme of contrast between the darkness and the coming Great Light, as Jesus is called in the prophecy of Isaiah 9:1. The Advent wreath is lit, and week by week, the light grows visibly and invisibly (in our hearts) as we prepare for Christ's coming.

For children ages 1-3: Notice all the candles and remark, "Jesus is the Light of the world."

For children ages 3-8: "I wonder why there are candles when they are reading God's word?" "...by the altar at the consecration?" "...for a baptism?"

Lisa Dedinsky, CGS Catechist



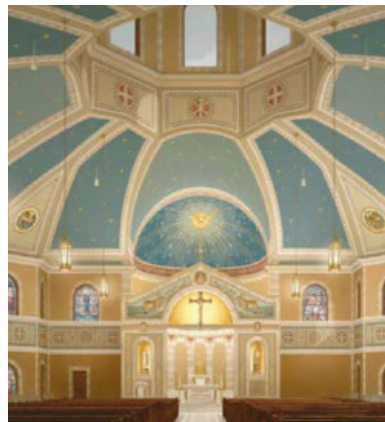
SCHOOL'S OPEN HOUSE

Are you interested in enrolling your child at St. Charles Parish School for the 2024-2025 school year? Save the date for our upcoming Open House on **Sunday, January 21 from 10 a.m.-12:30 p.m.!** This is a great opportunity to meet Principal Garvey, our teaching staff, and currently-enrolled families to learn more about what makes our school community so special!

BULLETIN DUE DATES!

If you have an event(s) you would like to publicize in a December and/or January bulletin, please submit your information by the due dates listed below. This earlier deadline is due to the printer's holiday schedule. **Please submit all articles by 8:00 am on the due date.** Thank you!

- Dec. 24th Bulletin information is due Monday, Dec. 11th
- Dec. 31st Bulletin information is due Monday, Dec. 18th
- Jan. 7th Bulletin information is due Wednesday, Dec. 20th
- Jan. 14th Bulletin information is due Wednesday, Jan. 3rd



Save the date for
our new church's

*Dedication
Weekend*
from April 5-7!

More information
will be coming soon.
Stay tuned!



**2023 CHRISTMAS PARTY
FOR USHERS**

**Wednesday, Dec. 13th at 6:30pm
in the Borromeo Room**

Everyone who helps to usher at church including full-time, part-time and sometimes.

Come for food, refreshments & camaraderie.



FELLOWSHIP WEEKEND DECEMBER 16 & 17

Join fellow parishioners for conversation and a donut/snack at Fellowship Weekend in the Parish Hall, December 16 and 17 after all the Masses. A big thank you to St. Vincent de Paul (SVdP) who will be hosting this event and for the sponsors supporting it! The SVdP members will also be there to give information on the how you can help the needy and/or how you can become a member. Feel free to talk to one of the members serving to find out more about St. Charles' St. Vincent de Paul Society.



**LAKE COUNTRY BREAD OF LIFE
COMMUNITY MEAL
AT ST. CHARLES**

Thursday, Dec. 14th
Doors open at 4:30 pm
Dinner is served at 5:30 pm

This month St. Charles Thursday Morning's Men's Group will provide and serve the food for the meal. The meal will be a Christmas celebration with holiday ham and sides.

St. Charles Outreach Services Team will oversee the event. If you would like to volunteer or have any questions, please contact the Parish Office or humanconcerns@stcharleshartland.org.



ADVENT

*The Light that leads
us home!*

CHRISTMAS CHURCH FLOWERS

The beautiful decorations in our Church during the Christmas season lift our spirits closer to the Lord Jesus as we celebrate His birth. They help us to pray more deeply and feel closer to one another. We invite you to donate toward our decorations by making an offering in memory of a loved one, in thanksgiving for a blessing in your life, for a special intention or simply as a free-will offering. We will list the names of the people remembered, the blessings recalled or the intentions held in your hearts in the bulletin on Jan. 10th. However, we will not print the donor's name nor the amount given. **NEW this year, you can give by the offertory envelopes mailed to your home if you give by envelope. You can list your information on the back of the envelope.**

If you wish to make this offering, please fill out this form or mailed offertory envelope and return it with your donation to the Parish Office by Wednesday, Dec. 27th.

Name of Donor _____ Phone _____

In Memory of those Deceased _____

Blessing Recalled _____

Special Intention _____

Amount Enclosed \$ _____

PLEASE PRINT –THANK YOU



ST. VINCENT de PAUL SOCIETY



FOOD PANTRY NEEDS: Mandarin Oranges, Cooking Oil, Cheerios Cereal, Corned Beef Hash, Variety of Canned Tomato Products, Mayonnaise

In today's Gospel on the Second Sunday in Advent, John the Baptist urges us to "Prepare the way of the Lord." We are called to help prepare the way of the Lord by making the real meaning of Christmas come alive in our own hearts, in our family, and to reach out to those in need.

Is there a family you know who needs assistance? Please contact St. Charles' St. Vincent de Paul (SVDP) at 262-367-0800 so that together we can help the suffering and the poor to celebrate Christmas. The St. Charles SVDP Food Pantry is located at 229 Lawn Street, Hartland. It is open every Tuesday morning between 10am and noon. It is also open on the second and fourth Tuesday evenings of the month between 5:30pm and 7pm.



SUPPORT ST. CHARLES AND DO YOUR HOLIDAY SHOPPING!

One of the simplest ways to financially support St. Charles Parish and School without spending an extra dime is through RaiseRight, formerly ShopWithScrip. Your everyday expenses for groceries, gas, gifts and dinner out can give back 1% to 15% of your purchase cost to St. Charles. By buying Scrip cards at the parish or online, you are providing a financial boost to St. Charles without spending a single penny more. Some cards are even easily refillable online.

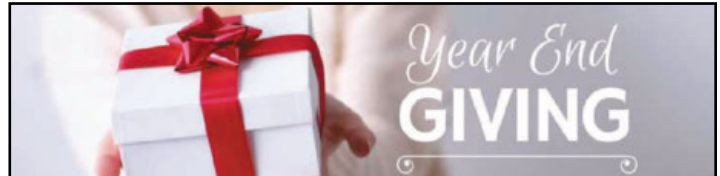
To help with your holiday gifting, you can get your Scrip gift cards after all weekend Masses except for the 6pm Mass through NEXT WEEKEND (December 16 & 17) in the Parish Office.

Thank you for supporting St. Charles!



THERE IS STILL TIME TO MAKE YOUR PLEDGE COMMITMENT!

If you have already submitted your pledge commitment card to support our parish operations, thank you! If you have not, it's not too late. You may drop off your card at the Parish Office, mail it to the parish or go to our parish website to make your pledge commitment online.



YOUR SUPPORT MEANS EVERYTHING!

We thank you for keeping St. Charles at the forefront in this season of giving and for your generous financial support to help St. Charles be the light of Christ in our community! **Please drop off year-end donations to the Parish Office no later than Wednesday, December 27 to allow adequate time to record contributions for 2023.** For information or questions about contributing an end-of-year donation to St. Charles Parish and School, please contact Deacon Jon Gabik at jgabik@stcharleshartland.org or 262-367-0800 x201.



As of November 6, 2023, St. Charles has reached 94.86% of our goal for the Catholic Stewardship Appeal. Thank you to all who have contributed.

Bulletin Advertisers of the Week Please support our advertisers!

Broaching Technologies

Machines - Tooling - Subcontracting

Blind and Thru Hole: www.keyway-spline-broaching.com
Broaching, Splining, Keyseating, P (262) 820-1200
Slotting, Shaping sales@broachingtech.com



Lenten Retreat to La Sagrada Familia in the Dominican Republic

Sister Parish of the Archdiocese of Milwaukee

March 11-16, 2024

EXPERIENCE the richness of our relationship of Unity in Faith and Action.

ENGAGE in day-to-day life and the rich spirituality of our brothers and sisters throughout the parish.

CELEBRATE our diversity and common faith as we acknowledge God's blessing and faithfulness to God's people.

Includes:

- Round-trip economy class airfare from Milwaukee to Santo Domingo
- Ground transportation
- Six days/ five nights accommodations (includes breakfast, lunch, and dinner)
- Guided tours of the parish, surrounding communities, and the Colonial City in Santo Domingo

The trip cost is \$2,100 per person with a \$400 non-refundable deposit due on 12/15/2023)



<https://tinyurl.com/marchlenten2024>



wmo@archmil.org | 414-758-2280 | PO Box 070912 Milwaukee, WI 53207-0912



Join us FOR SIMBANG GABI

A Filipino devotional, nine-day series of Masses in preparation for Christmas.

Mass | Music | Food | Fun

December 15 – 23, 2023

Simbang Gabi is the annual Filipino festival commemorating the Advent season with a devotional, nine-day series of Masses. This important festival celebration will include worship, music, food, and fun! Scan here or visit the Archdiocese of Milwaukee website for more information.

archmil.org/simbang-gabi



ARCHDIOCESE of MILWAUKEE



LADIES: IF YOU ARE AGED 35+, THIS EVENING IS FOR YOU!

January 17, 2024 • 6:30-8 p.m. | Cost: \$15

Christ King Parish | 2604 N. Swan Blvd., Milwaukee, WI 53226

Menopause occurs between ages 45-55 for many women. Perimenopause is the 10 years prior to menopause. During this transitional time, women experience shifting menstrual cycle patterns and fertility. Learn what that looks like and what to expect at our new Perimenopause Prep event.

Whether you're already noticing cycle changes, or are just looking ahead, this event will equip you with the tools needed to navigate perimenopause with confidence and positivity! Grab a sister or a friend and plan to join us!

Contact Tori Franke with questions
franket@archmil.org, 414-758-2241



PERIMENOPAUSE PREP
Learn Stages and Signs of Shifting Fertility



LEARN MORE OR REGISTER
<https://archmil.regfox.com/perimenopause-prep>



ARCHDIOCESE of MILWAUKEE





Ground Crew Service

Full Service Landscape Management

262.821.9680

www.groundcrewservice.com

Hartland Terrace
Assisted Living

- RN Lead 24-Hour Elite Care Team
- Full Continuum of Care • Memory Care
- All Inclusive Pricing • Private Studios
- Family Centered Care Model

327 North Avenue • Hartland | 262-369-4391
www.hartlandterrace.com

TODD WANGERIN
ELECTRIC, Inc.

Free Estimates - Licensed - Insured
Over 20 years experience

Todd Wangerin 262-719-4411
twelectric4411@att.net

ALTERNATIVE
ROOFING & CONSTRUCTION

FREE ESTIMATES!

LOCAL CONTRACTOR
414-745-3365
wisconsinroofers.com

R&R
INSURANCE

Rick Kalscheuer
Parish Member
MyKnowledgeBroker.com
800.566.7007

we know.

Carrier
Turn to the experts

Pat's Heating & Air Conditioning
262-567-7499
OCONOMOWOC
www.patsheating.com

Holzauer, Hewett & Barta S.C.
Orthodontic Care For Children And Adults

Daniel Holzauer DDS MS | Charles Hewett DDS MS | Joshua Barta DDS MS

520 Hartbrook Dr., Hartland
2516 N. Grandview Blvd, Waukesha
10225 W. Capitol Dr., Wauwatosa

262-567-7076
262-547-6365
414-463-5700

BUNZEL'S OLD FASHIONED MEAT MARKET

Fresh Custom Cut Choice Meats
Party Trays • Catering

Thank You For Supporting A Family Tradition
9015 W. BURLEIGH 873-7960
www.bunzelmeats.com

DOES YOUR NONPROFIT ORGANIZATION NEED A NEWSLETTER?

Engaging, ad-supported print and digital newsletters to reach your community.

Visit Ipicommunities.com

OUR COMMUNITY NEWSLETTER
NETWORK EDITION

Scan to contact us!

KOWAL INVESTMENT GROUP
The Retirement Specialists

Aaron T. Kowal, CFP®
W238N1660 Busse Rd., Ste. 100, Waukesha, WI 53188
262-522-4040
www.kowalinvestmentgroup.com

Kowal Investment Group, LLC ("Kowal") is a Registered Investment Advisor ("RIA"), with the U.S. Securities and Exchange Commission ("SEC"). Kowal provides investment advisory and related services for clients in State of Wisconsin and other states.

Hartland Family CHIROPRACTIC
211 Cottonwood Ave, Hartland
(262) 367-7424
www.hartlandchiro.com

Dr. Hans Halaska

FOOT & ANKLE
Associates of Wisconsin

Parish Member
Dr. Amy Galati

Call: (262) 542-3779
www.footandanklewi.com

AMERICAN LEGION POST 294
231 Goodwin Ave.

Remember **VETERANS DAY**, Nov. 11th.

Fly the Flag - Ceremonies at Post 10:30 AM

Flanagan-Dorn Post 294 of the American Legion also wishes all Vets and Members of St. Charles a Very Happy Thanksgiving & the Merriest of Christmases. Please remember those who currently are serving, won't you?

See us @ wilegion.org
414-975-5951 or 262-549-6463

Culver's
701 Industrial Ct., Hartland
262-367-5800

TOWN BANK
A WINTRUST COMMUNITY BANK

800-433-3076
www.townbank.us

MICHAEL J. FINN S.C.
ATTORNEY AT LAW
PARISH MEMBER

262-367-8485
mjfinnsc@sbcglobal.net
163 E. Capitol Dr., Hartland, WI 53029

VISU-SEWER, INC.
262-695-2340

Professional Sewer Inspection, Maintenance and Rehabilitation Services

Parish Members
www.visu-sewer.com

catholicmatch® Wisconsin

CatholicMatch.com/WI

LAKESIDE BADGERLAND IDEALEASE
INTERNATIONAL TRUCKS

Bill Reilly, Jr. Parish Member

Offering Wisconsin businesses transportation solutions nearly 40 years.

- Truck Sales
- Parts
- Service
- Body Shop
- Leasing & Rental

SERVING: Milwaukee • Madison • Racine
West Bend • Sheboygan • Janesville • Monroe • Rockford

CHARLES
St. Charles School... We choose Christ in learning, living, & values in the light of our faith.

262-367-2040
www.stcharlesschoolhartland.com

JENSON MOTORS
Auto - Truck Repair

Hours: Mon-Fri 7:30-5:30
Proprietor: Guy Jenson
262-367-5556
364 Cottonwood Ave., Hartland, WI

PROMACH Performance, Packaged

CL&D **\$2,000 RETENTION BONUS IN THE FIRST YEAR!**
\$20+/HOUR
cldgraphics.com/careers

EVERT-LUKO FUNERAL HOME
& CREMATION SERVICES

Guiding with skillful hands and soulful hearts

262-367-2156
www.evertlukofuneralhome.com

KLINK'S KARPETS, INC.
Hartland's Floor Covering Center

Family Owned & Operated for over 47 Years

Carpeting & Hard Surfaces
107 North Ave. Hartland, WI
367-4670 Parish Member

We help real estate investors invest in passive assets and defer tax.

If you are planning on selling your investment property, let's talk.

Broaching Technologies
Machines • Tooling • Subcontracting

Blind and Thru Hole: www.keyway-spline-broaching.com
Broaching, Splining, Keyseating, P (262) 820-1200
Slotting, Shaping sales@broachingtech.com

DAVE PERRY
heating • cooling

Proudly Serving the Lake Country Area for more than 20 years

Heating • Air Conditioning • Geothermal
New Construction • Replacement
262.966.1959
www.daveperryheatingandcooling.com

INSIGHT INVESTMENT ADVISORS

BRANDON BRUCKMAN
414-882-8738
www.investwithinsight.com

LET'S GROW YOUR BUSINESS

Place Your Ad Here and Support Our Parish!

CONTACT ME Jeff Tkachuk
jtkachuk@4LPi.com • (800) 950-9952 x2513

Generations DENTAL

Jim Muenzenberger, D.D.S.
and Kelly Newman, D.D.S.
Parish Members

190 E. Capitol Dr.
Hartland, WI 53029
Office 262-367-2750
GenerationsDentalHartland.com

Sprung Heating & Pump Service LLC
www.sprungheating.com

HVAC • Plumbing • Well Pumps • Generators

Karl Sprung
Office 262.578.5853
PO BOX 3024 Mertins, WI 53054

Lake Country Eye Care

580 Hartbrook Dr. • Hartland, WI
Amber A. Dentz, OD - Parishioner
www.lakecountryeyecare.com
262-367-6610



For ad info. call 1-800-950-9952 • www.4lpi.com

St. Charles Catholic Church, Hartland, WI

B 4C 01-0639

Helping you achieve financial dreams



James Dunn
Managing Director – Financial Advisor
(262) 395-1101
www.dunninvestmentmanagement.com



Lake Five
LANDSCAPE SUPPLY LLC
Mulch • Firewood • Nursery
262-777-1523
W275N7813 Lake Five Rd Hartland, WI
LakeFiveSupply.com

Lake Country
Bed Barn
Good Morning Store
Mattress & Furniture Store
Downtown Hartland
Parish Member

Brenna Fischer
Hairstylist
262-844-5934
601 Ryan St., Ste 302
PEWAUKEE WI
brennafischer.glossgenius.com

REICHL & KOLSTAD
ORTHODONTICS

Dr. Peter Reichl & Dr. James Kolstad
look forward to meeting you!

Offering Traditional Braces & Invisalign
Located in Waukesha,
Mukwonago & Hartland
262-547-2827
www.ReichlKolstadOrtho.com

WISE
DESIGN BUILDERS
262-790-4444
Parish Members
www.wisedesignbuilders.com

Lake Country Remodeling Specialist

MY OTHER GARAGE
SELF STORAGE
262-966-9000
1 Mile East of North Lake

CARPET PLUS, INC.
We Bring the Showroom to You!
(414) 573-0105
Proudly Serving Crusader Nation for over 20 years!
Dan Taylor, Parish Member

COURI
INSURANCE
AGENCY
Protection for the Unexpected™

Coverages
IMPORTANT
Pricing
IMPORTANT
Low Costs
GREAT COVERAGES
Jerry & Judie Couri
262-548-8077 • couri.com

DON CULL EXCAVATING
W298 N9248 Center Oak Rd
Septic & Mound Systems Grading
966-7038
MPRS 221589

CCI
Corporate Contractors Inc.
CCIWI.COM

Angela Isherwood
Owner & Luxury Travel Designer
Parishioner
262.229.9271
Angela@OliveAndAtlasTravel.com
www.OliveAndAtlasTravel.com

SPORTS GRILL

PIZZA • FRIDAY FISH FRY • SANDWICHES
*\$5.00 OFF ANY 16" PIZZA
*SUNDAY'S "KIDS EAT FREE" WITH ADULT PURCHASE

We do Parties & Catering!
Not valid with any other offers or coupons
369-0079
300 COTTONWOOD • HARTLAND
PARISH MEMBER

IF YOU LIVE ALONE

MDMedAlert!™
As Low As **\$19.95** mo.
CALL NOW! **800.808.9294** • md-medalert.com

- ✓ Ambulance/Police
- ✓ Family/Friends
- ✓ GPS & Fall Alert

LET'S GROW YOUR BUSINESS
Place Your Ad Here and Support Our Parish!

CONTACT ME Jeff Tkachuk
jtkachuk@4LPi.com • (800) 950-9952 x2513

The GOOD DENTIST
Dr. Marta Ostromecki, DDS Parishioner
(262) 223-3169
www.tgdentist.com
Always Accepting New Patients
N67W28025 Sussex Rd., Suite 100, Hartland, WI



PAUN Construction
Specializing in Masonry
Residential & Commercial
W300 N7741 Christine Ln., Hartland, WI 53029
Robert J. Paun (262) 326-8043
www.paunconstruction.com
mail@paunconstruction.com

ADT-Monitored Home Security
Get 24-Hour Protection From a Name You Can Trust

- Burglary
- Fire Safety
- Flood Detection
- Carbon Monoxide

833-287-3502

What Will Be Your Legacy?

If you value your faith and your family, I welcome the opportunity to share my faith-based perspective in union with my financial experience in order to co-create a personal legacy strategy. I can assist with: Portfolio Management | Retirement Planning | Financial & Legacy Strategies | Special Needs Planning

Kurt Maltby, CFP®, ChSNC®
CERTIFIED FINANCIAL PLANNER™
Assistant Vice President, Financial Advisor

Morgan Stanley
20975 Swenson Drive, Waukesha
Phone: (262) 523-8303 | NMLS # 1504808
advisor.morganstanley.com/the-riverwood-wealth-management-group

Parishioner

Morgan Stanley and its Financial Advisors do not provide tax or legal advice. Individuals should seek advice based on their particular circumstances from an independent tax advisor. Morgan Stanley Smith Barney LLC, Member SIPC. CIRC818748 08/18

Please Support these
CONTRACTORS
Thank You to these contractors helping St Charles grow!

NELCO ELECTRIC, INC.
GERMANTOWN, WI
Commercial • Industrial • Residential
24 Hour Service **262-502-9950**
WWW.NELCOELECTRIC.COM
Barb Jarchow Parishioner

DFI OMASINI, INC.
CONTRACTORS
262 / 820-8300

SEWAGE AND WATER INSTALLATION
WHEN YOU EXPECT THE BEST

Wolf Electric LLC
Commercial, Industrial, Residential
Garrett Wolf • Master Electrician/Parishioner
Commercial • Industrial • Residential
(414) 899-3608 • www.wolfelectricllc.com

Join our Team!

Serve your local Catholic Community, become an agent with the Knights of Columbus!

Contact us at www.kofcwi.org

Life Insurance • Disability Income Insurance
Long Term Insurance • Retirement Annuities

Tim J. Nowak, FICF
General Agent
(920) 810-6188
timothy.nowak@kofc.org

Knights of Columbus

FRONTIER
TITLE & CLOSING SERVICES

1130 James Drive, Hartland, WI 53029
Office: 262-361-4466 Fax: 262-361-4462
www.frontiertitlellc.com

Frontier Title & Closing Services, LLC
Lake Country's Most Experienced
Title & Closing Company
Specializing in Residential, Commercial
& New Construction Transactions
Serving the Real Estate Community!

Custom Asphalt Solutions Since 1941

WOLF PAVING

Parking Lots
Private Roads
Walking Paths
Athletic Courts

wolfpaving.com

zimmerman
ARCHITECTURAL STUDIOS, INC.

300 Silver Sky, Verona Avenue
Milwaukee, WI 53233 | zimmerman.com

TELEPHONE (414) 478-9500
FACSIMILE (414) 478-8584